

CHP-70 (Gen. 2)

Extended Full-Range emitter

Black paper cone model



CHP-70 Gen. 2 Full Range audio driver.

This updated (Gen. 2) CHP-70 driver is designed to make a semi-vintage classic sound, similar to the smaller full range driver designs from the 1950's. Its middle-high range output has been made to "roll-off" from 7-kHz up. This helps to keep the high range sounding smooth and warm. This driver makes the singers voice sound very natural, a little warm, pleasing for many hours of listening.

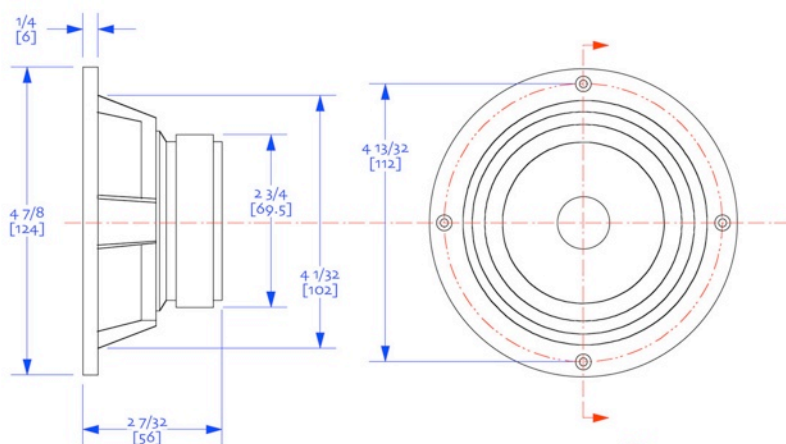
The CHP-70 Gen. 2 will assist in the control of sharp or hard sounding compressed music (digital) . This CHP delivers a tone that appeals to classic music enthusiasts using smaller amplifiers. The off-axis and sound-spread of the CHP-70 is excellent. This driver is capable of filling a room environment with an "easy listening" experience, especially for human voice. The bass response from the CHP-70 Gen. 2 in a properly tuned box is excellent for this smaller sized driver. Typically, in a Bass-Reflex or Vented box, lower responses close to 40Hz can be obtained.

Many technical improvements has been done.

- 1 - Improved stiffer frame.
- 2 - New cap design with new improved fitting method.
- 3 - New Japanese deigned coil.
- 4 - New spider for improved bass.
- 5 -2 colour choice (natural paper and black paper cones)

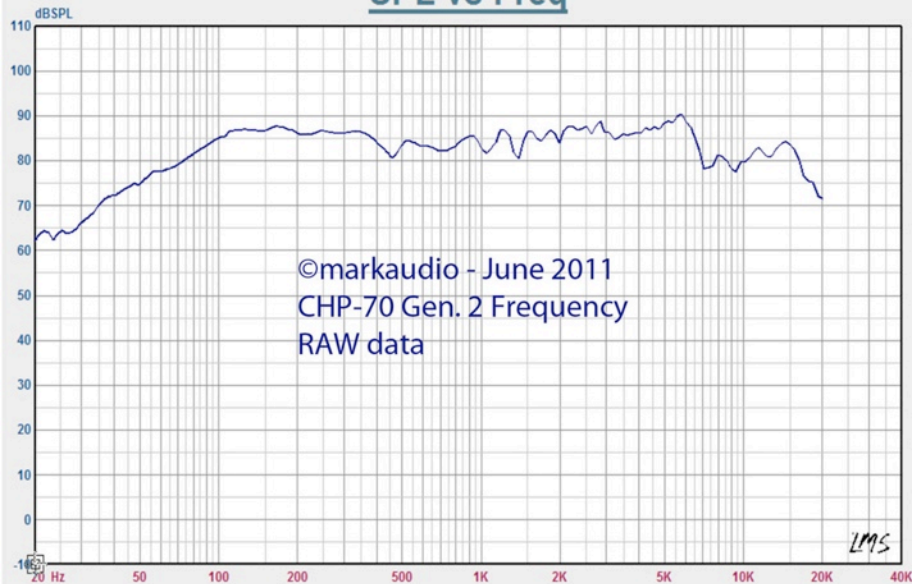
The CHP-70 Gen. 2 is an excellent "classic" and "natural" sound driver.

CHP-70 Gen. 2	Data
REVC	7.2 Ohm
Fo	72.3
Sd	5.02 K mm/2
Vas	4.7 Ltrs
Cms	1.31 uM/N
Mmd	3.49 g
Mms	3.70 g
BL	4.24 G/cm
Qms	2.30
Qes	0.67
Qts	0.52
Levc	30.61 uH
No	0.26%
Spl	86.5 dB
Pwr	20w Nom.
X max	4-mm 1 way
Coil Dia	20-mm
Main tolerance	+/- 2hz on mean Fo

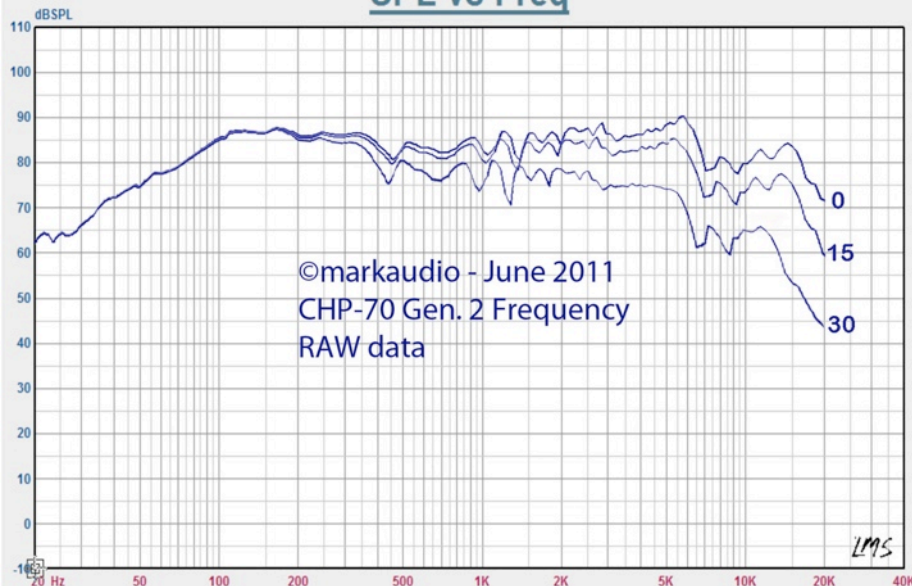


Note that these come with a 2mm gasket , which doesn't compress very much, so it needs to be accounted for when cutting the rebates.

SPL vs Freq



SPL vs Freq



Impedance vs Freq

